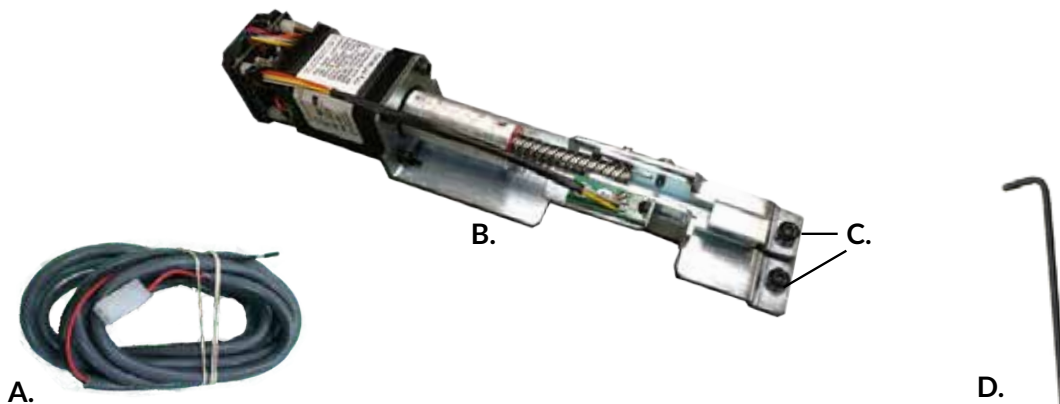


LLP-UL-M-KIT



INSTALLATION INSTRUCTIONS

The LLP-UL-M-KIT is a field installable motorized latch pullback kit for the Hager 4500 and Lawrence 8000 series.



LLP-UL-M-KIT INCLUDES

- A. 6' Power Lead
- B. Motor Mount w/ MM4 series Module
- C. 2 - Bottom Head Allen Screws
- D. Allen Wrench 3/32

TOOLS REQUIRED

- Phillips Screwdriver

INSTALLATION VIDEO



SCAN OR CLICK

1

Not to Scale

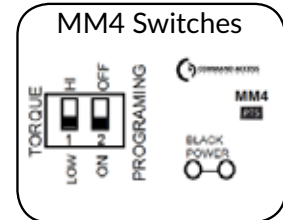
The use of non-clutching impact drivers to install this hardware will automatically void the warranty.

TECHNICAL INFORMATION



SPECIFICATIONS

- Input Voltage: 24VDC +/- 10%
- Average In-rush Current: 1 Amp
- Average Holding Current: 180 mA
- Wire gauge: Minimum 20 gauge



SETTING PTS

****Important Info****

Make sure to set PTS before finishing installation!

Step 1- Press the device push pad to the desired setting. (this can be fully depressed or less than fully depressed).

Step 2- While depressing the push pad, apply power. (i.e. presenting the credential to the reader).

Step 3- Continue to keep pad depressed, the device will beep 6 times, roughly 5 seconds. After the beeps have stopped, release the pad and now the adjustment is complete. If not to your liking repeat the three steps. That's all there is to it.

TROUBLESHOOTING & DIAGNOSTICS

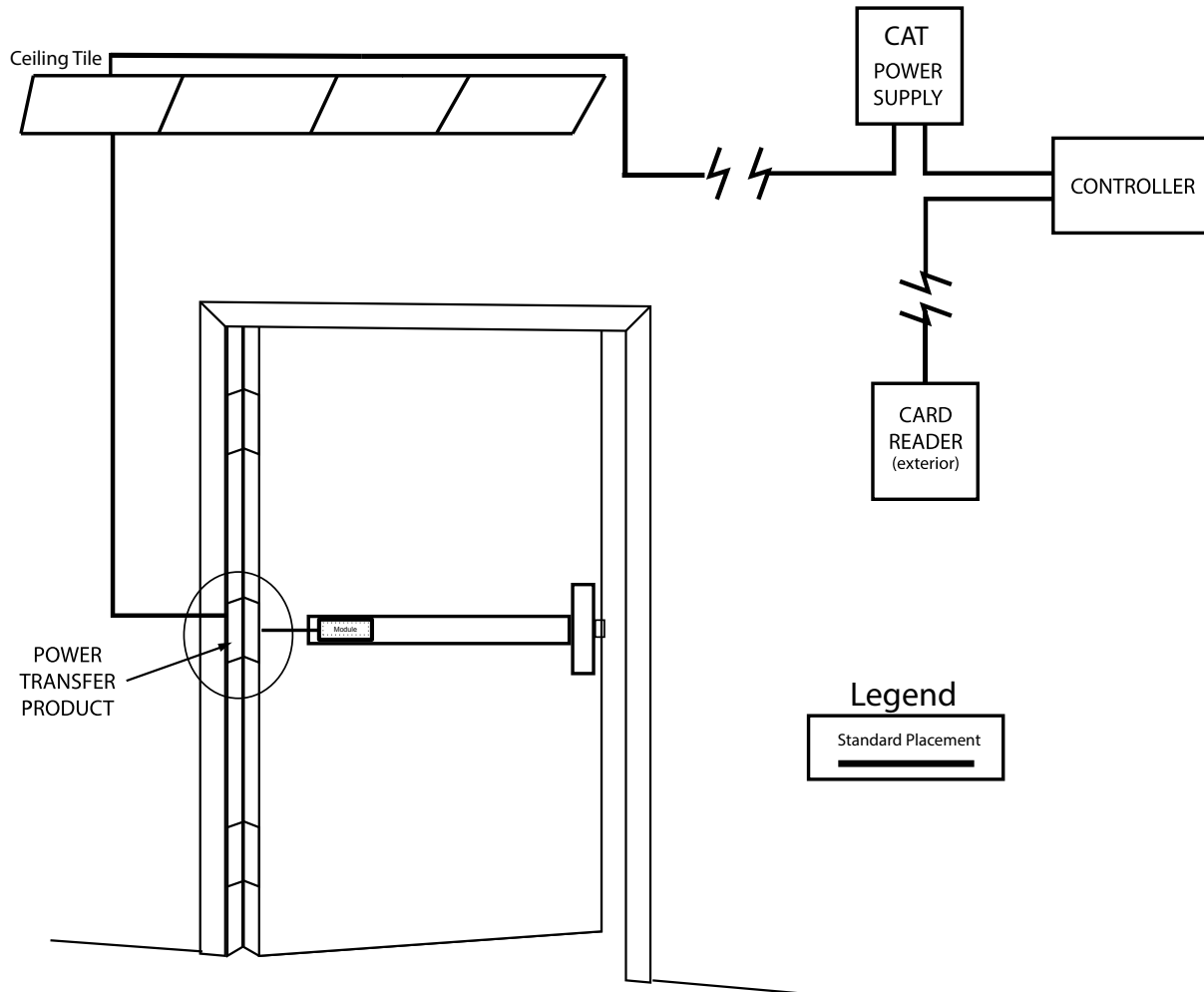
| BEEPS | EXPLANATION | SOLUTION |
|---------|---|---|
| 2 Beeps | Over Voltage | > 28V unit will shut down. Check voltage & adjust to 24 V. |
| 3 Beeps | Under Voltage | < 22V unit will shut down. Check voltage & adjust to 24 V. |
| 4 Beeps | Failed Sensor | Verify all 3 sensor wires are installed correctly. Replace sensor if problem persists by contacting CAT tech support. |
| 5 Beeps | Forced Release | Device will automatically re-engage within 5 seconds. |
| 6 Beeps | Push pad is depressed. Device is re-adjusting | Check to make sure the push pad is not stuck or catching on anything. |
| 7 Beeps | Over-travel or mechanical obstruction | If mechanical obstruction, remove & push pad down until beeping stops to reset. If no obstruction, the pad may have been pushed in too far during PTS calibration. Recalibrate with the pad slightly out. If problem persists, verify the magnet is within 1/4" of the sensor at the end of travel. |

2

Not to Scale

The use of non-clutching impact drivers to install this hardware will automatically void the warranty.

ELECTRIFIED EXIT DEVICE INSTALLATION EXAMPLE



RECOMMENDED POWER SUPPLIES:

All Command Access exit devices & field installable kits have been thoroughly cycle tested with Command Access power supplies at our factory.

For more information [click here](#) or go to our website



Not to Scale

The use of non-clutching impact drivers to install this hardware will automatically void the warranty.

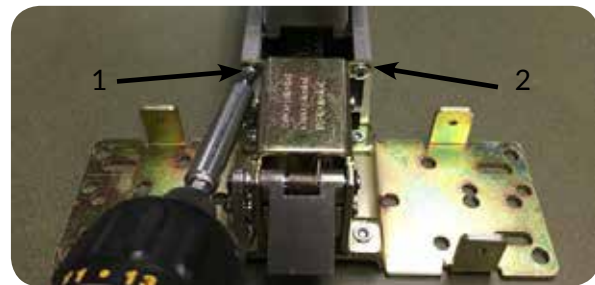
- Remove head cover.



- Remove filler plate.



- Remove (2) screws
securing base rail to
housing.



- Slide off housing, exposing
baserail and push pad.



- If your device has dogging will
remove it, if your device doesn't
please skip ahead 3 steps.



Not to Scale

The use of non-clutching impact drivers to install this hardware will automatically void the warranty.

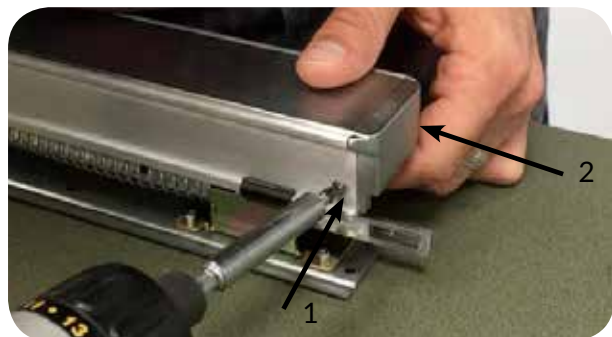
- Flip over the push pad and remove (2) phillips screws securing dogging assembly to baserail.



- Remove dogging assembly and place aside.



- Remove (2) screws from back of the push pad.



Not to Scale

The use of non-clutching impact drivers to install this hardware will automatically void the warranty.

- Remove push pad end cap



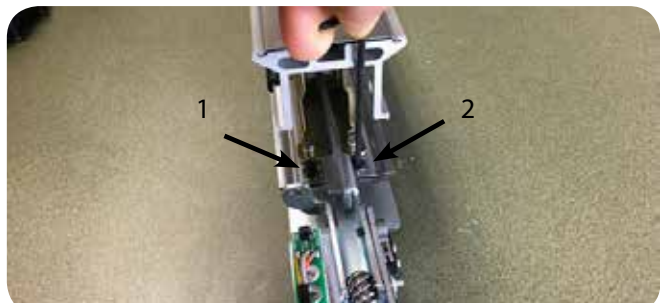
- Depress the push pad to extend dogging hole. Slide motor mount attaching hook into dogging hole.



- Release push pad and line up holes on baserail with holes on motor mount underneath.



- Install (2) screws with allen wrench provided to secure the motor moun to the baserail.



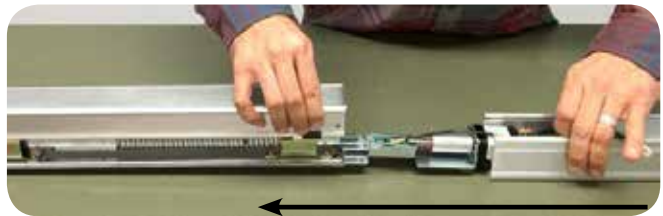
Not to Scale

The use of non-clutching impact drivers to install this hardware will automatically void the warranty.

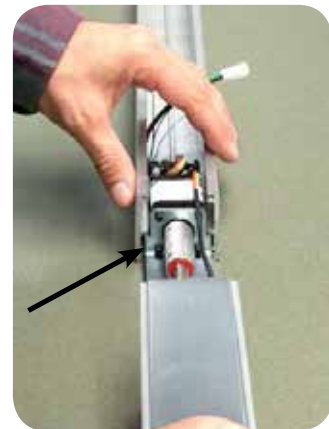
- Re-install the push pad end cap with (2) screws.



- Slide housing back onto baserail being cautious not to pinch any wires



- While sliding housing back on make sure motor bracket fits between existing grooves.



- Confirm motor has seated properly but see if the bottom bracket is sitting flush on the baserail.



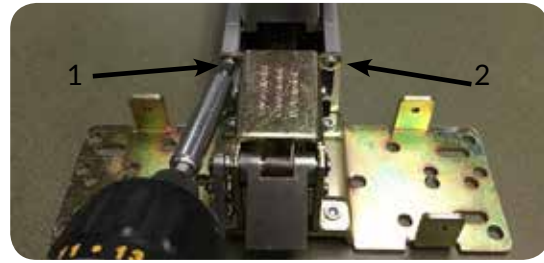
- Attach to power and test to confirm motor is functioning.



Not to Scale

The use of non-clutching impact drivers to install this hardware will automatically void the warranty.

- Re-install (2) screws securing base rail to housing.



- Re-install filler plate being cautious of wires.



- Re-install the head cover.



- Hook up to power. Depress push pad & set PTS adjustment.



SETTING PTS

Step 1- Press the device push pad to the desired setting. (this can be fully depressed or less than fully depressed).

Step 2- While depressing the push pad, apply power. (i.e. presenting the credential to the reader).

Step 3- Continue to keep pad depressed, the device will beep 6 times. After the beeps have stopped, release the pad and now the adjustment is complete. If not to your liking repeat the three steps. That's all there is to it.

Not to Scale

The use of non-clutching impact drivers to install this hardware will automatically void the warranty.