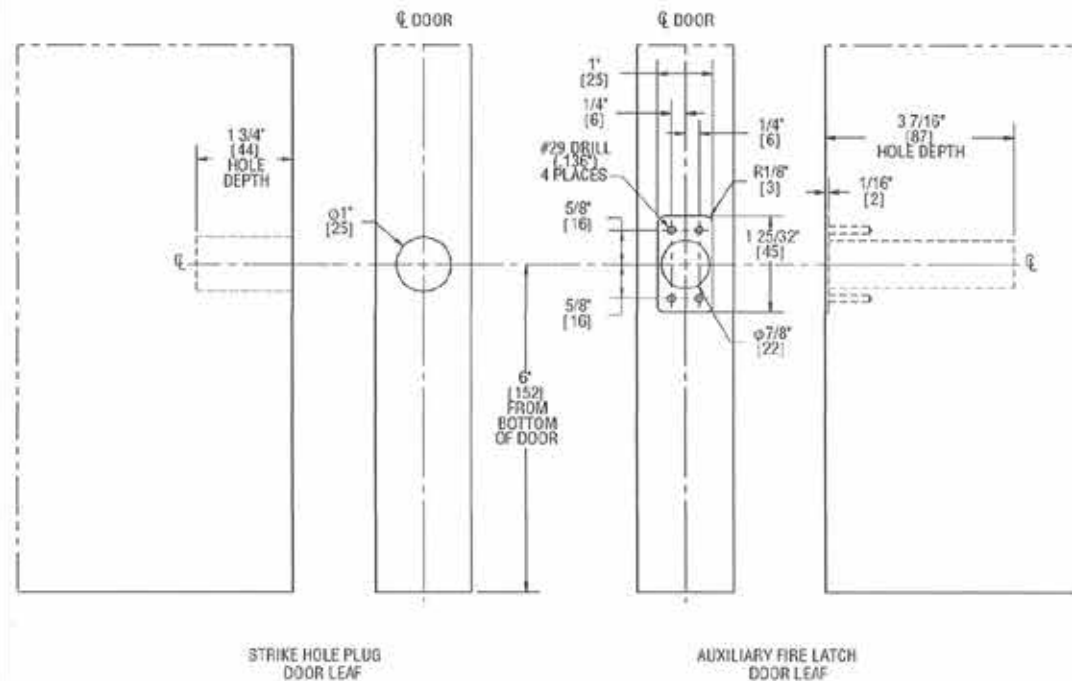


### STEP 1: PREPARE AUXILIARY FIRE LATCH DOOR LEAF

- Mark horizontal centerline 6" [152 mm] from the bottom of door.
- Mark vertical centerline at center of door thickness.
- Drill a 7/8" [22 mm] diameter by 3-7/16" [87 mm] deep hole in the auxiliary fire latch door leaf.
- Insert auxiliary fire latch in hole keeping it parallel to face of door. Mark outline of latch face plate and remove latch.
- Chisel 1/16" [2 mm] deep or until latch face plate is flush with door edge.
- Pre-drill screw holes with a 1/8" drill.

### STEP 2: PREPARE STRIKE HOLE PLUG DOOR LEAF

- Transfer horizontal centerline from latch door leaf.
- Mark vertical centerline at center of door thickness.
- Drill a 1" [25 mm] diameter by 1-3/4" [44 mm] deep hole in the strike plug door leaf.



Not to Scale

The use of non-clutching impact drivers to install this hardware will automatically void the warranty.