

Installation Procedure:

- Determine** the direction of slider based on door width, from 24" ~ 48" for 1 3/4" ~ 2 1/4" Butts & 3/4" Offset Pivot, select proper dimensions as shown on Table 1 ; from 27" ~ 48" for 1 3/4" ~ 2 1/4" Center Hung, as shown on Table 2.
- Determine** desired degree of door opening as shown on Table 1 & Table 2 respectively.

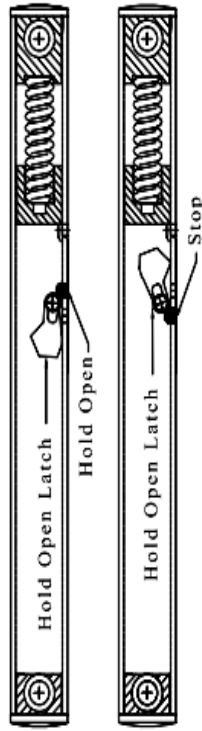
Table 1 :

Door Width (Inches)	Opening Degree	For All degrees			85°		90°		95°		100°		105°		110°	
		A			B		L		B		L		B		L	
		Inches	mm		Inches	mm	Inches	mm	Inches	mm	Inches	mm	Inches	mm	Inches	mm
24	Inches	2 3/4	19 5/16		6 27/32	13 3/16	13 3/16	5 23/64	13 3/16	5 1/2	13 37/64	13 31/32	5 19/64	13 31/32	5 23/64	14 3/8
	mm	72.50	490.55		174.15	335.00	335.00	136.20	335.00	134.30	345.00	345.00	134.45	355.00	136.00	365.00
25	Inches	3 1/4	19 5/16	7 4/32	5 1/4	13 3/16	13 3/16	5 1/64	13 37/64	5	13 31/32	14 3/8	5 1/32	14 3/8	5 1/8	14 49/64
	mm	85.20	490.55	180.90	131.50	335.00	335.00	127.50	345.00	126.65	355.00	355.00	127.70	365.00	129.95	375.00
26 ~ 28	Inches	4 1/4	19 5/16	6 3/32	6 3/64	14 3/8	14 3/8	5 47/64	14 49/64	5 9/16	15 5/32	15 5/32	5 33/64	15 35/64	5 17/32	15 15/16
	mm	110.60	490.55	167.35	153.60	365.00	365.00	145.55	375.00	141.55	385.00	385.00	140.25	395.00	140.80	405.00
29 ~ 33	Inches	6 1/4	19 5/16	6 29/32	6 3/16	16 5/16	16 5/16	5 49/64	16 23/32	5 9/16	17 1/8	17 1/8	5 31/64	17 1/2	5 1/2	17 29/32
	mm	161.40	490.55	175.10	156.85	415.00	415.00	146.40	425.00	141.20	435.00	435.00	139.30	445.00	139.60	455.00
34 ~ 38	Inches	8 3/4	19 5/16	7 3/4	7	16 5/16	16 5/16	6 1/2	16 23/32	6 7/32	17 1/8	17 1/8	6 1/16	17 1/2	5 3/32	17 1/2
	mm	224.90	490.55	196.80	177.75	415.00	415.00	165.25	425.00	157.75	435.00	435.00	153.80	445.00	129.50	445.00
39 ~ 43	Inches	11 1/4	19 5/16	7 25/32	6 13/16	18 1/16	18 1/16	6 15/64	19 1/8	5 29/32	19 31/64	19 31/64	5 3/4	19 7/8	5 23/32	20 9/32
	mm	288.40	490.55	197.50	173.15	475.00	475.00	158.30	485.00	150.20	495.00	495.00	146.40	505.00	145.35	515.00
44 ~ 48	Inches	13 25/64	19 5/16	7 59/64	6 25/32	20 43/64	20 43/64	6 8/8	21 1/16	5 25/32	21 29/64	21 29/64	5 5/8	21 27/32	5 19/32	22 1/4
	mm	340.00	490.55	201.35	172.30	525.00	525.00	155.50	535.00	146.80	545.00	545.00	143.00	555.00	142.10	565.00

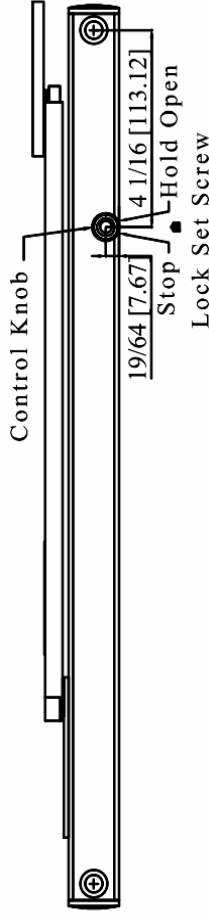
Table 2 :

Door Width (Inches)	Opening Degree	For All degrees			85°		90°		95°		100°		105°		110°	
		A			B		L		B		L		B		L	
		Inches	mm		Inches	mm	Inches	mm	Inches	mm	Inches	mm	Inches	mm	Inches	mm
27 ~ 30	Inches	4 9/64	19 5/16	7 13/32	7 3/64	13 3/16	13 37/64	6 25/32	13 31/32	6 39/64	14 3/8	14 3/8	6 33/64	14 49/64	6 15/32	15 5/32
	mm	105.00	490.55	187.95	178.90	345.00	345.00	172.45	355.00	168.05	365.00	365.00	165.35	375.00	164.10	385.00
31 ~ 33	Inches	6 7/64	19 5/16	8 3/64	7 17/32	15 5/64	15 35/64	7 5/32	15 15/16	6 57/64	16 3/32	16 11/32	6 23/32	16 47/64	5 31/32	16 47/64
	mm	155.00	490.55	204.25	191.25	395.00	395.00	181.75	405.00	175.10	415.00	415.00	170.75	425.00	151.45	425.00
34 ~ 38	Inches	10 15/64	19 5/16	7 29/32	7 5/32	16 1/3	16 23/32	6 57/64	17 1/8	6 39/64	17 1/2	17 1/2	6 7/16	17 29/32	6 21/64	18 5/16
	mm	260.00	490.55	200.75	185.80	425.00	425.00	175.20	435.00	168.05	445.00	445.00	163.50	455.00	160.90	465.00
39 ~ 43	Inches	13 25/64	19 5/16	7 37/64	7 61/64	19 3/32	19 7/8	7 23/64	20 9/32	6 15/16	20 43/64	20 43/64	6 43/64	21 1/16	6 33/64	21 29/64
	mm	340.00	490.55	192.30	202.05	505.00	505.00	186.80	515.00	176.40	525.00	525.00	169.60	535.00	165.45	545.00
44 ~ 48	Inches	14 11/64	19 5/16	7 25/32	8 7/64	20 43/64	20 43/64	7 15/32	21 1/16	7 1/64	21 29/64	21 29/64	6 47/64	21 27/32	6 35/64	22 1/4
	mm	360.0	490.55	197.50	205.90	525.00	525.00	189.50	535.00	178.30	545.00	545.00	170.95	555.00	166.45	565.00

3. **Determine** "Hold open" or "Stop" function by turning Hold Open Latch. Turn Hold Open Latch toward Spring to "Stop" function and farthest away from Spring to convert to "Hold Open" as shown on drawing D. Tighten set screw as shown on drawing E.

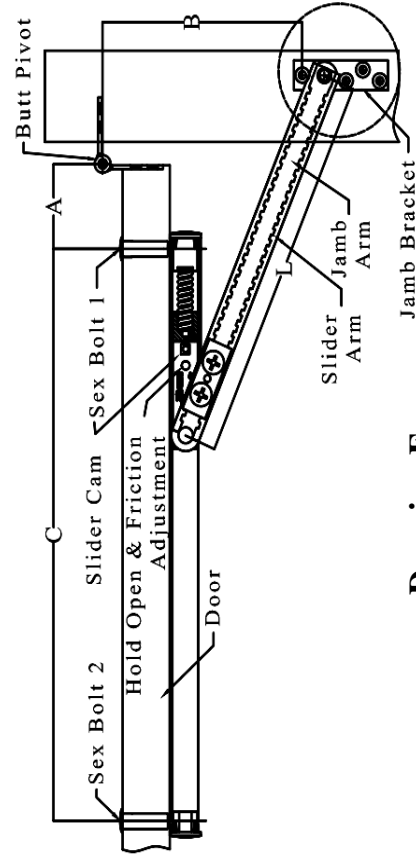


Drawing D

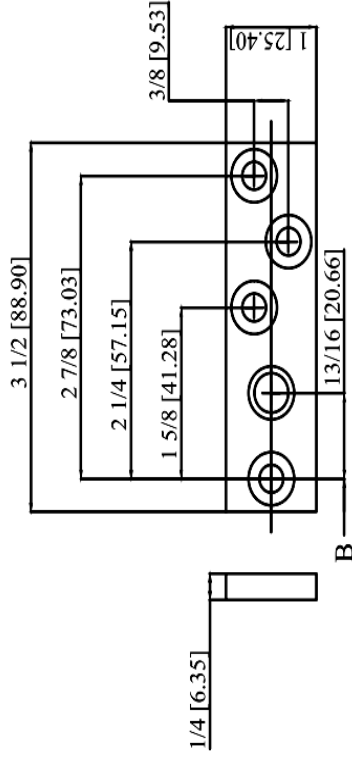


Drawing E

4. **Locate** "A" & "B" dimensions on door and frame as drawing F. Install jamb bracket on stop strip as shown on drawing G.



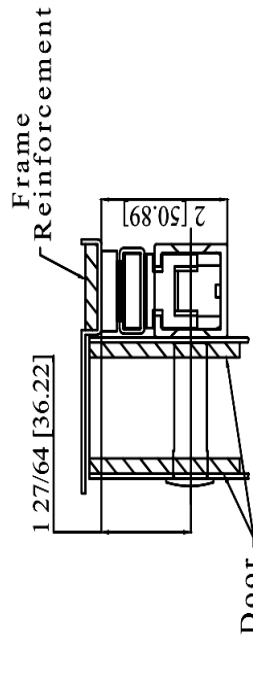
Drawing F



Jamb Bracket

Drawing G

5. **Position** channel on door with shock end located towards pivot. Drill 1/2" (12.70) dia. Sex bolt 1 hole, "A" dimension, 1 27/64" (36.22) down from stop strip as shown drawing H.
6. **Install** channel on door with "A" dimension sex bolt. Locate "C" dimension sex bolt hole making sure that channel is horizontal and parallel with stop strip. Drill 1/2" (12.70) dia. Sex bolt 2 hole and finish installing holder. Install control knob on drawing E.



Drawing H

Note:

1. All hollow metal frames are to be provided with 3/16" (4.8) min. Thickness X 12" (304.80) min length reinforcement plates.
2. All hollow metal doors are to be properly reinforced with 2 1/2" (63.50) wide X 3/16" (4.8) min. Thickness X full width of door reinforcement plates.
3. Hold open and friction are not permitted for use on fire doors. When used as hold open should be with door closer together, then UL listed is applicable.
4. All dimensions without showing unit are given in Inches [mm].