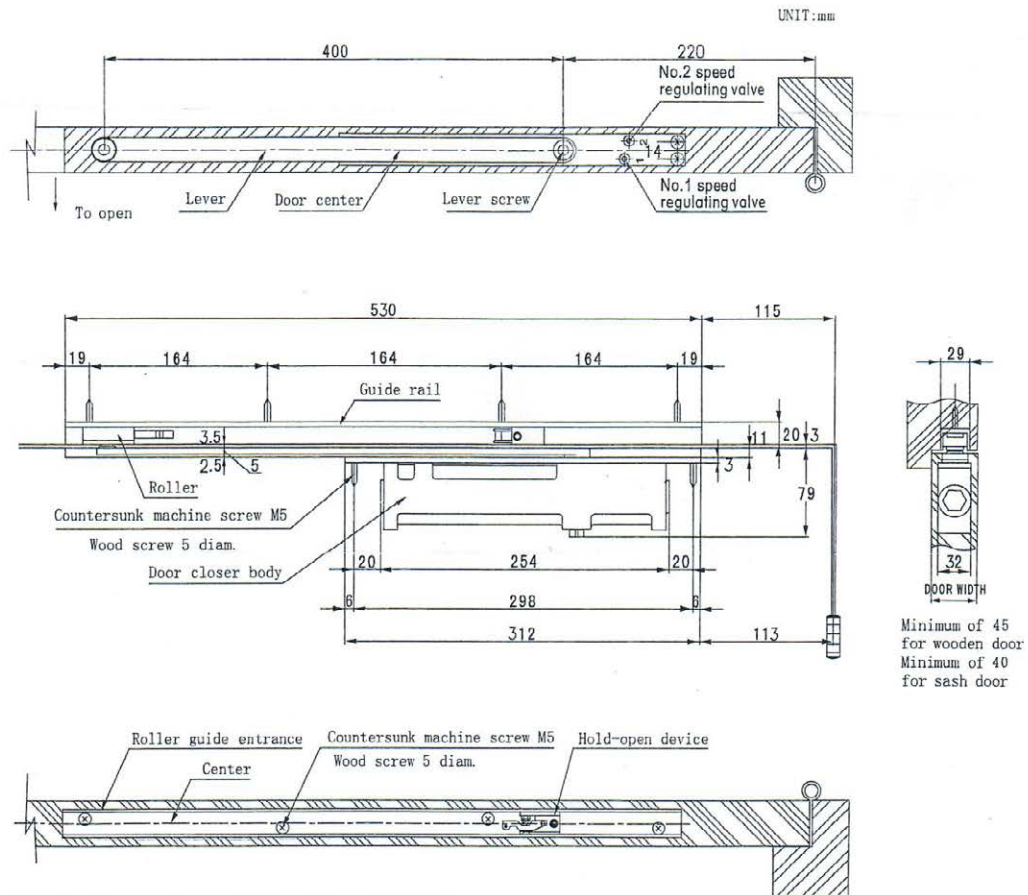


FULLY CONCEALED DOOR CLOSER

Installation Instructions

LEFT HAND DOOR ILLUSTRATED
 SAME DIMENSIONS APPLY TO RIGHT HAND DOOR



Applicable doors		Maximum opening angle
Dimensions (mm)	Weight (kg)	
900×2000	40~65	120°

Note:

1. The valves on both sides have been adjusted to the proper location by the factory people when ready. The two downward valves should be closed down completely (turning to the end clockwise) before your installing the closer inside the door.
2. The signs of "L" or "R" are marked on top and bottom sides of the body. Install the part with "L" upward when used for the left hand door; Install the one with "R" upward when used for the right hand door.

Not to Scale

The use of non-clutching impact drivers to install this hardware will automatically void the warranty.