

**PARALLEL ARM(PUSH SIDE)Mounting
 LEFT HAND DOOR SHOWN**

Diagram showing dimensions for left-hand door mounting. Key dimensions include: 2 3/4" (70mm) for the top bracket offset, 2" (51mm) for the top bracket width, 3/4" (19mm) for the top bracket offset from the door edge, 5 1/8" (8mm) for the door thickness, 7 1/8" (181mm) for the door stop offset, 2 15/16" (75mm) for the door stop height, 3/4" (19mm) for the door stop width, and dimensions A and B for the door opening.

BRACKET
 5/32" OR 4mm
 HEX WRENCH

Backcheck
 To increase power
 turn clockwise
 To decrease power
 turn counter clockwise
Power Adjustment Screw

OPENING	DIMENSION	
	A	B
To 100°	2" (50.8mm)	12" (304.8mm)
101°-150°	1 1/4" (32mm)	12" (304.8mm)

**PARALLEL ARM(PUSH SIDE)Mounting
 RIGHT HAND DOOR SHOWN**

Diagram showing dimensions for right-hand door mounting. Key dimensions include: 3/4" (19mm) for the top bracket offset from the door edge, 2 3/4" (70mm) for the top bracket offset, 2" (51mm) for the top bracket width, 5 1/8" (8mm) for the door thickness, 7 1/8" (181mm) for the door stop offset, 2 15/16" (75mm) for the door stop height, 3/4" (19mm) for the door stop width, and dimensions B and A for the door opening.

BRACKET
 5/32" OR 4mm
 HEX WRENCH

DOOR CLOSER ADJUSTMENT
 Please refer to INSTALLATION INSTRUCTION SHEET.

Not to Scale

The use of non-clutching impact drivers to install this hardware will automatically void the warranty.

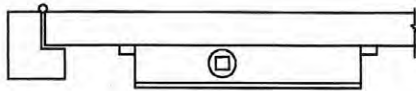
INSTALLATION SEQUENCE

LEFT HAND DOOR SHOWN- RIGHT HAND DOOR OPPOSITE

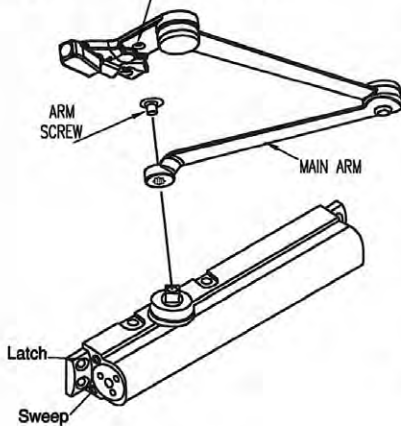
⚠ CAUTION
 IMPROPER INSTALLATION OR REGULATION
 MAY RESULT IN PERSONAL INJURY OR
 PROPERTY DAMAGE.FOLLOW ALL
 INSTRUCTIONS CAREFULLY.

INSTALLATION INSTRUCTIONS

- 1.Using template dimensions shown above.Mark FOUR (4) HOLES ON DOOR for door closer and FOUR (4) HOLES ON FRAME for parallel bracket.
- 2.Mount closer on door using screws provided. SPEED ADJUSTING VALVE MUST BE POSITIONED AWAY FROM HINGE EDGE
- 3.Adjusting spring power to match door width or weight as indicated by Power Sdjustment Chart shown as below chart.
- 4.Mount closer on door to dimensions shown on page 1



Use the fifth hole screw and spacer only if there is a space between the frame and the shoe.



IMPORTANT REMARKS

Do NOT allow door to slam into frame.
 A normal standard closing time from 90° open position is 5 to 7 seconds evenly divided between main closing (Sweep) speed and latching speed. Adjust the SWEEP speed first, then adjust the LATCHING speed.
 For slower closing speed of door,turn adjusting valve of "S" clockwise and counter clockwise for faster speed.
 Latching speed control of door is the same mannger as Sweep speed adjustment.

ADJUSTABLE BACKCHECK FUNCTION

This function is essential to proper operation of HEAVY DUTYARM W/ DEAD STOP. Use enough to prevent arm from striking stop with impact. See page 1.

ATTACH COVER(if packed)

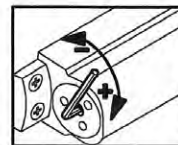
Install cover securely using screws provided.

Measure and determine your door's width. Using a hex wrench,adjust the closer spring power.Use the table below to determine number of turns required.

Turn counterclockwise for"-";turn clockwise for"+"

- ① These turns are recommended, but may change due to door weight and environmental conditions.

Door Width	Number of Turns
ADA setting	-5
32"-815mm	-3
36"-915mm	0
42"-1050mm	+5
48"-1220mm	+10
54"-1372mm	+15



Not to Scale

The use of non-clutching impact drivers to install this hardware will automatically void the warranty.

Spring CUSH (SCUSH)

Spring CUSH arms (SCUSH) have specific instructions for mounting the SCUSH shoe. Otherwise, SCUSH arms install like a regular CUSH arm.

▲IMPORTANT▲

DO NOT reduce the closer's backcheck setting! Spring CUSH arm function does not replace backcheck.

1 Locating

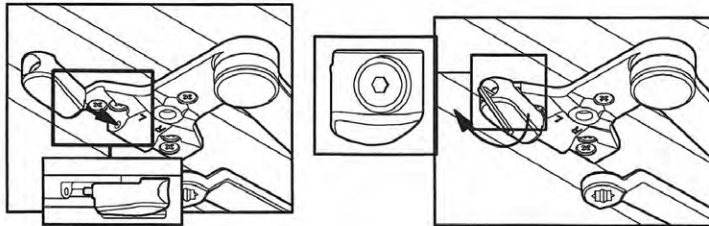
In new installations, use the standard CUSH template. When replacing an existing CUSH arm, use the existing mounting holes.

2 Installation

- a. Mount the shoe onto the frame.
- b. Use a 5/32" or 4mm hex wrench to install the contact block assembly, as shown below. Make sure the screw is tightened securely into the shoe.

3 Completing installation

- i Left Hand (LH) shown. Right Hand (RH) opposite.



Not to Scale

The use of non-clutching impact drivers to install this hardware will automatically void the warranty.