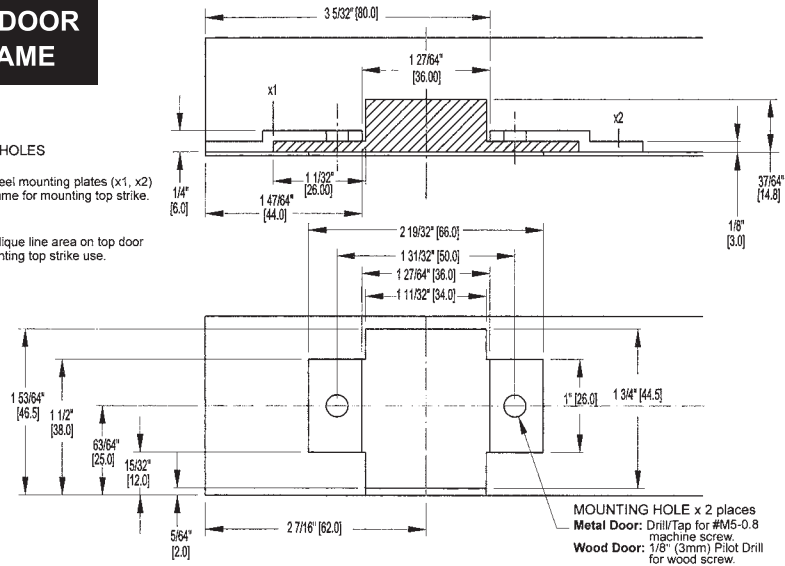


TOP DOOR FRAME

MOUNTING HOLES

Metal Door:
To weld two steel mounting plates (x1, x2) on top door frame for mounting top strike use.

Wood Door:
Cut out the oblique line area on top door frame for mounting top strike use.

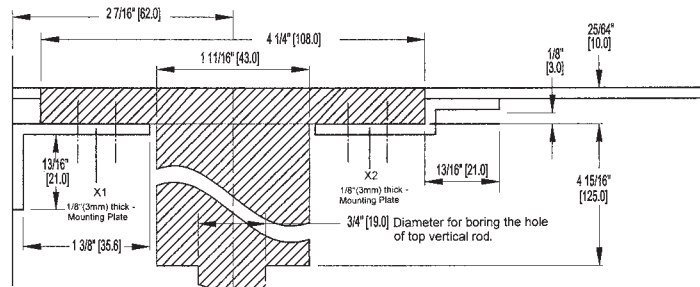


TOP EDGE OF DOOR

MOUNTING HOLES

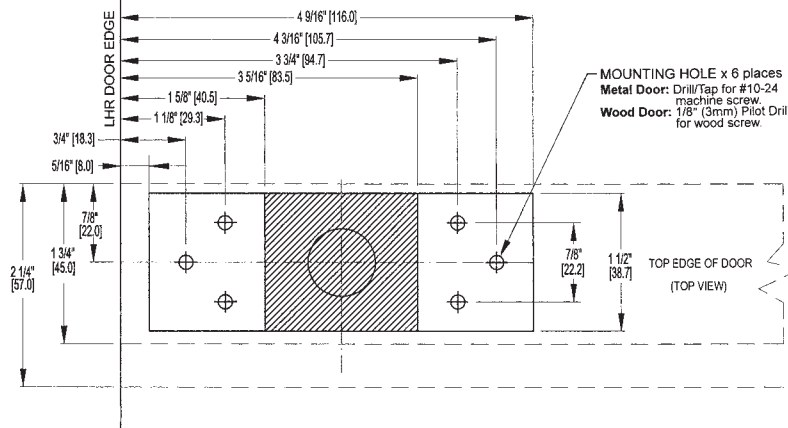
Metal Door:
To weld two steel mounting plates (X1, X2) on top edge of door for mounting top latch assembly use.

Wood Door:
Cut out and bore the oblique line area on top edge of door for mounting top latch assembly use.



● PRIMARY DIMENSIONS SHOWN IN INCHES.
DIMENSIONS IN [] ARE MILLIMETERS.

For RHR door use,
invert this template.



Printed in 2016

Not to Scale