

Parts list					
X1 	5Pcs Per 2m 	X1 	3Pcs Per 1m 	X2 	X1
X2 	X2 	X2 	X1 	X1 	X1
The tools required					

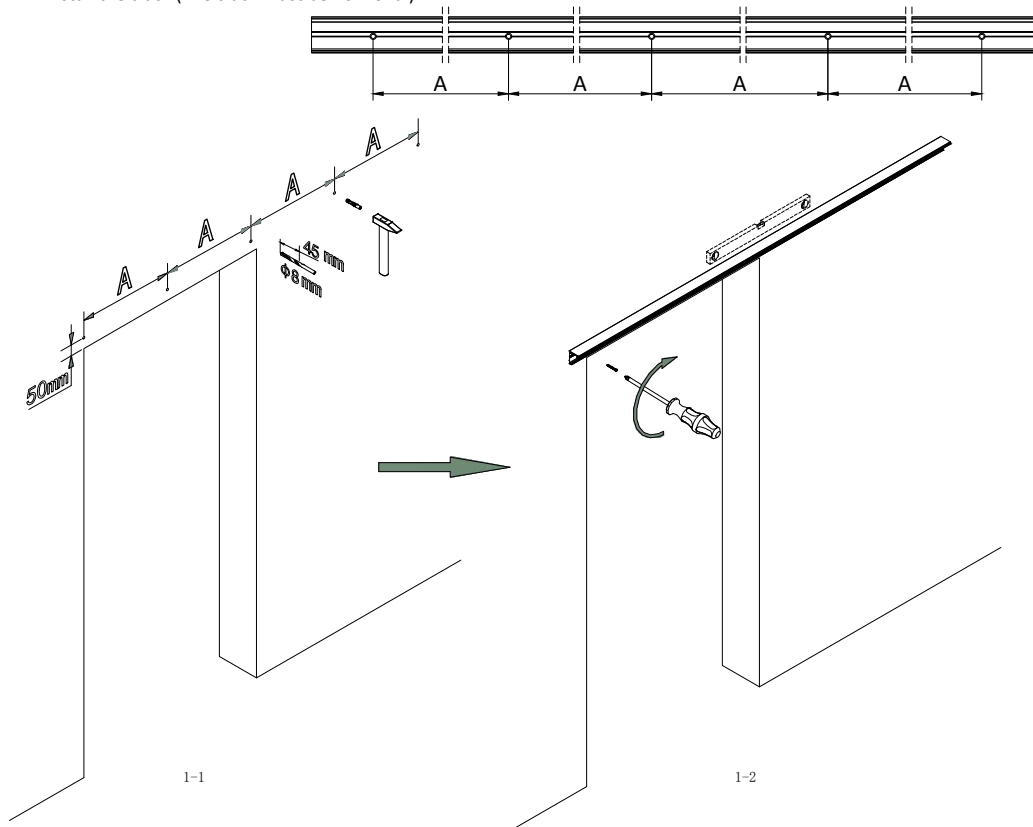
Not to Scale

The use of non-clutching impact drivers to install this hardware will automatically void the warranty.

1 Track installation

1-1 Drill dia 8 mm holes on wall according to the screw hole position of the track. Insert the plastic plugs.

1-2 Install the track (The track must be horizontal)

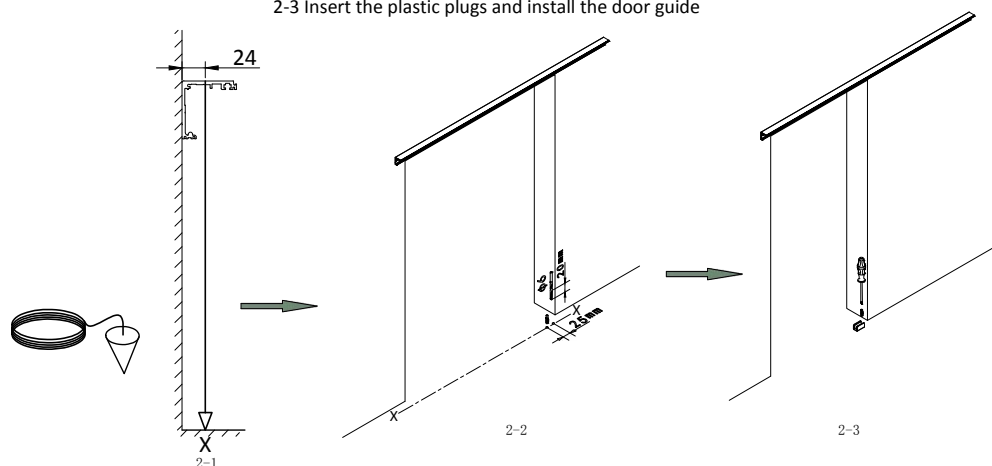


2 Door guide installation

2-1 Mark the installation position 24mm away from the wall by plumb bob.

2-2 Drill 6mm holes, 20mm deep

2-3 Insert the plastic plugs and install the door guide

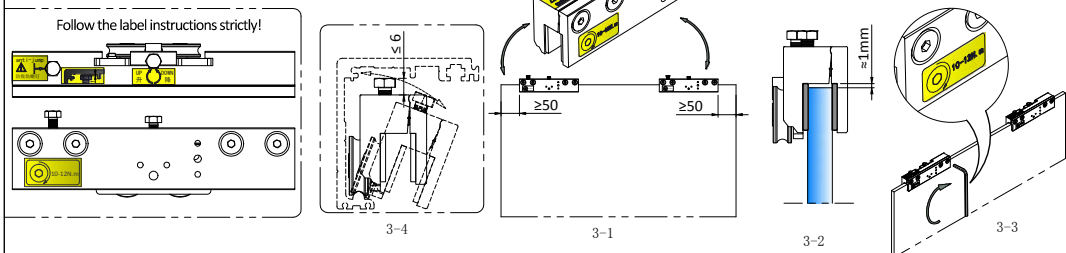


Not to Scale

The use of non-clutching impact drivers to install this hardware will automatically void the warranty.

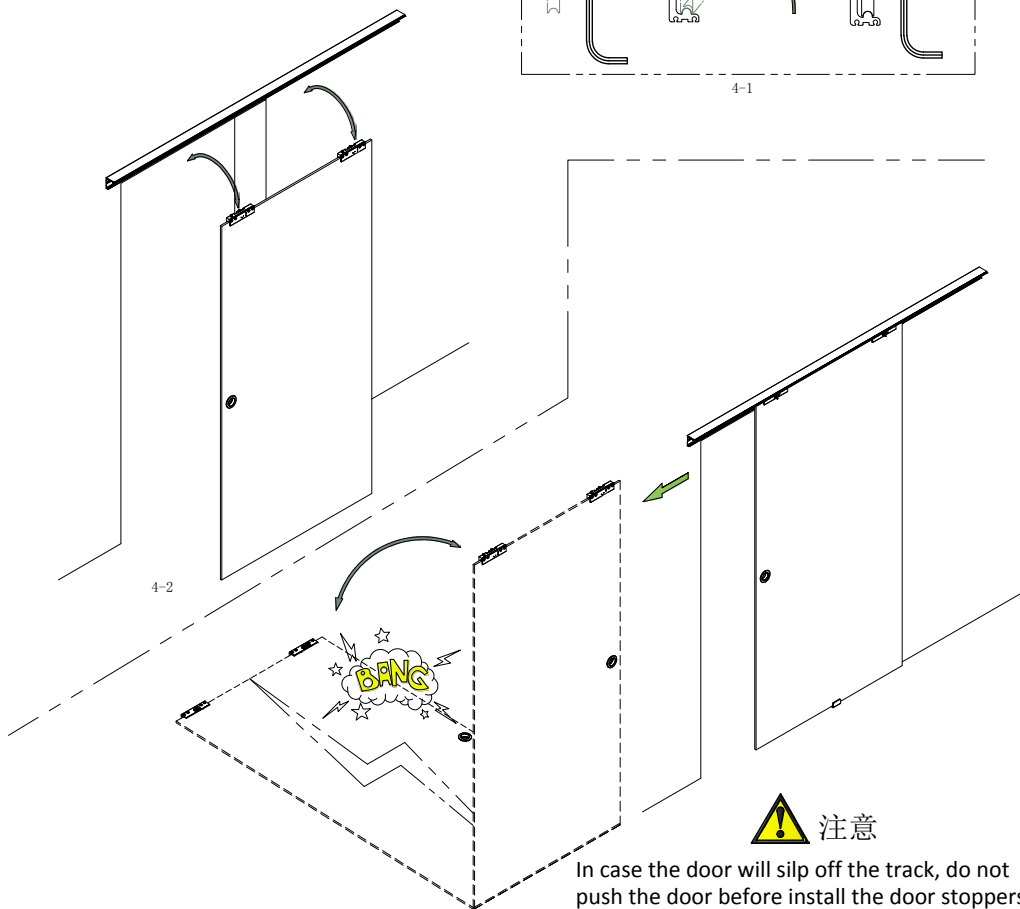
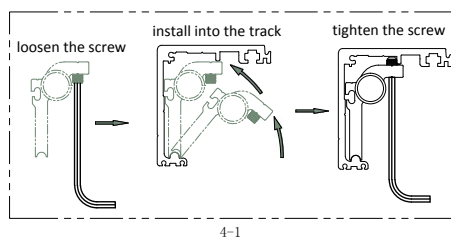
3 clamp installation

- 3-1 Loosen the 4 clamp screws until the door could fit in.
- 3-2 Leave 1mm gap between the top of the door and the clamp.
- 3-3 Tighten the screws with 12N.m torsion
- 3-4 For ease of installation, make sure the anti-jump machine screw extends less than 7mm.



4 Door installation

- 4-1 Pre-install the door stoppers and slightly tighten to prevent the door sliding out of track.
- 4-2 Install the door to the track.
- 4-3 Slowly Close/open the door to the extreme positions and decide the door stopper position accordingly.

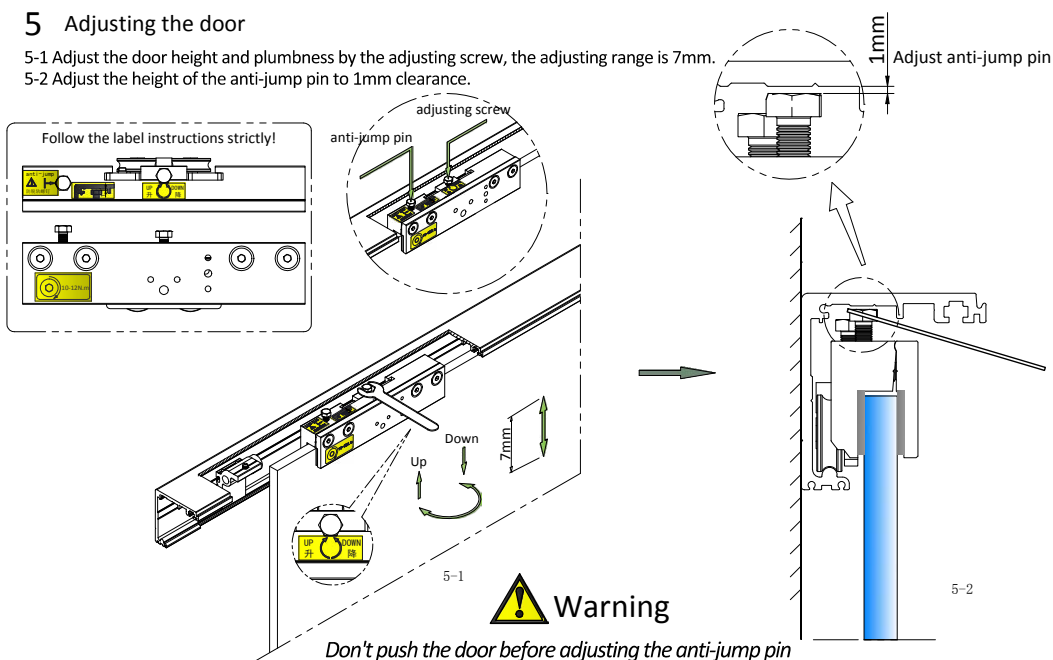


Not to Scale

The use of non-clutching impact drivers to install this hardware will automatically void the warranty.

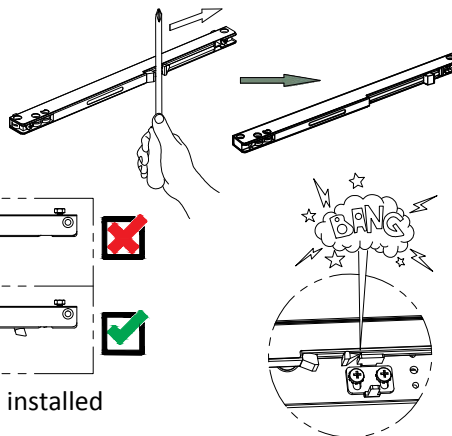
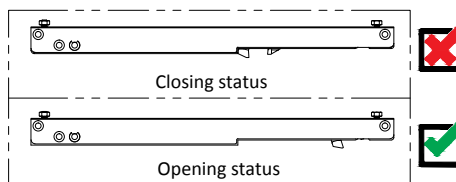
5 Adjusting the door

- 5-1 Adjust the door height and plumbness by the adjusting screw, the adjusting range is 7mm.
5-2 Adjust the height of the anti-jump pin to 1mm clearance.



6 Notice for use of damper

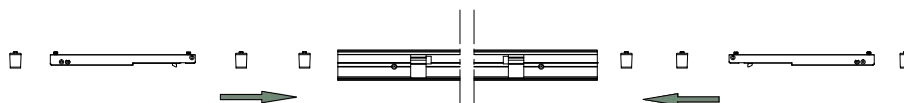
- 6-1 The damper must be in opening status before installation.
6-2 To avoid banging, please check and make sure the damper stayed in opening status after installation of the whole sliding system.



The damper in status of closing is prohibited to be installed
MUST NOT be installed in closing status!!!

7 Soft-closer and accessories installation

- 7-1 Slide the accessories into the track in order as the below picture shown



Not to Scale

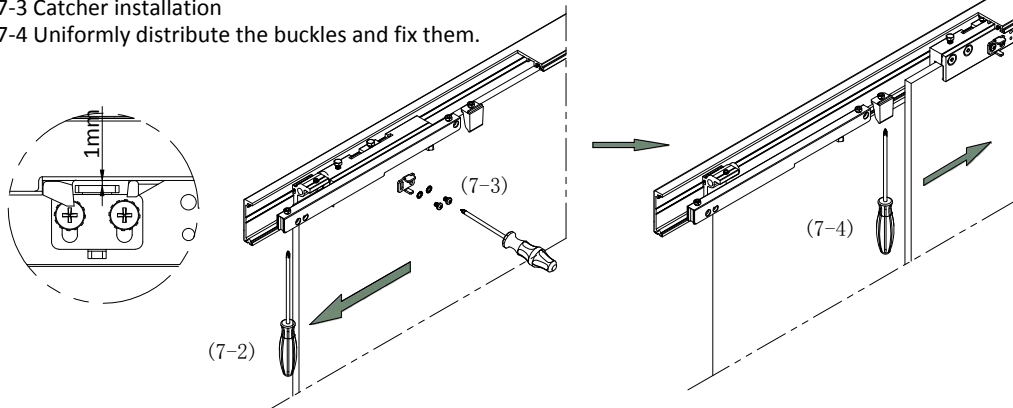
The use of non-clutching impact drivers to install this hardware will automatically void the warranty.

7-2 Open/ close the door to the extreme position. Decide the installation position of the soft close damper.

Fix the soft close dampers. (The same way for the right side and left side)

7-3 Catcher installation

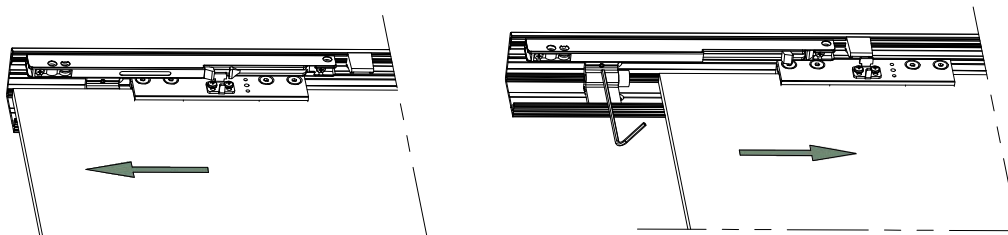
7-4 Uniformly distribute the buckles and fix them.



8 Door stopper installation

8-1 Open/close the door to the extreme position under the effect of the soft close,
Move the door stoppers to the suitable position and fix them.

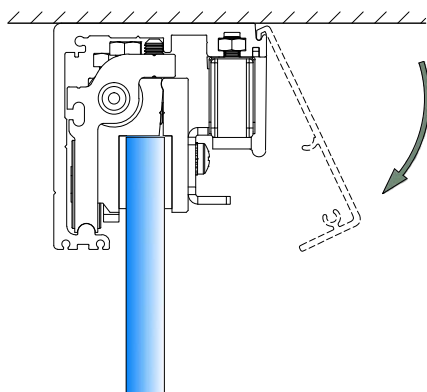
8-2 The same way for the right side and left side.



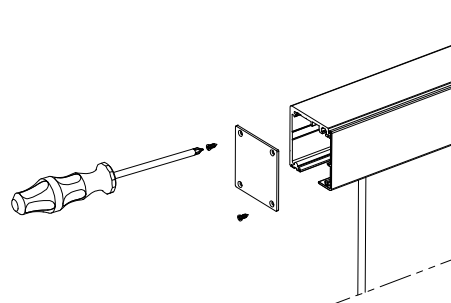
9 Decorative cover installation

9-1 Uniformly distribute the buckles and fix them

9-2 Install the decorative cover to the track as shown.



10 Side cover installation



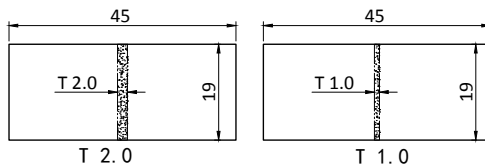
Right side and left side is the same

Not to Scale

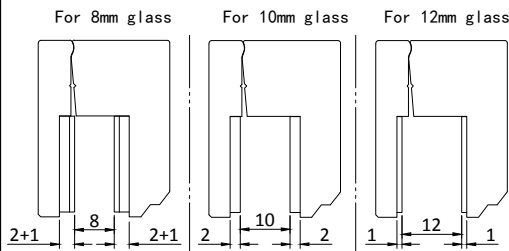
The use of non-clutching impact drivers to install this hardware will automatically void the warranty.

Instruction for glass clamp gasket

1. Gasket size



2. Gasket options



Gasket thickness	8mm QTY/clamp	10mm QTY/clamp	12mm QTY/clamp
T 1.0	4	0	4
T 2.0	4	4	0

3. Pasting instruction

3-1 Suitable Glue: INSTANT ADHESIVE For plastic/rubber

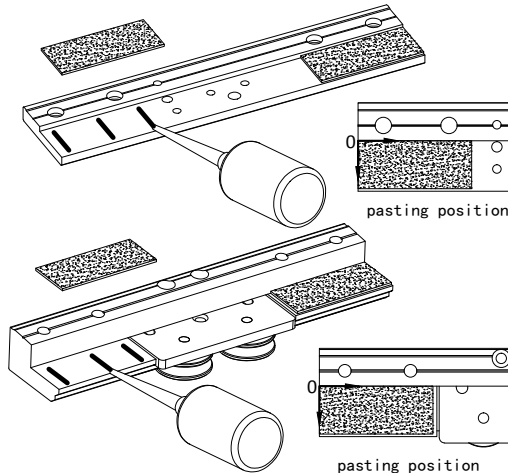
3-2 Apply glue:

3-2-1 Before applying glue, wipe down the place where you put it

3-2-2 Apply appropriate amount of glue to the clamp as picture shown.

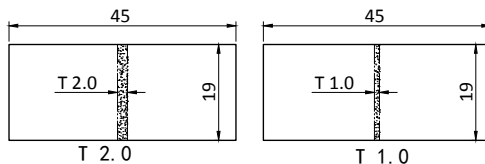
Attention:

Use proper amount of glue in case the glue overflow.

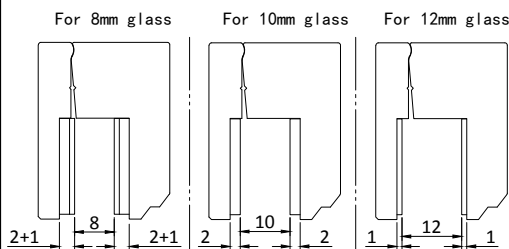


Instruction for glass clamp gasket

1. Gasket size



2. Gasket options



Gasket thickness	8mm QTY/clamp	10mm QTY/clamp	12mm QTY/clamp
T 1.0	4	0	4
T 2.0	4	4	0

3. Pasting instruction

3-1 Suitable Glue: INSTANT ADHESIVE For plastic/rubber

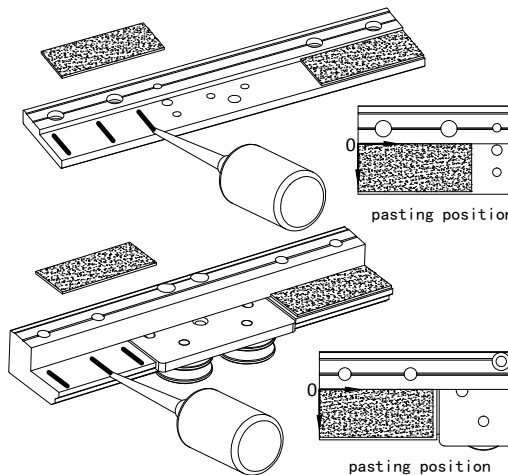
3-2 Apply glue:

3-2-1 Before applying glue, wipe down the place where you put it

3-2-2 Apply appropriate amount of glue to the clamp as picture shown.

Attention:

Use proper amount of glue in case the glue overflow.



Not to Scale

The use of non-clutching impact drivers to install this hardware will automatically void the warranty.