



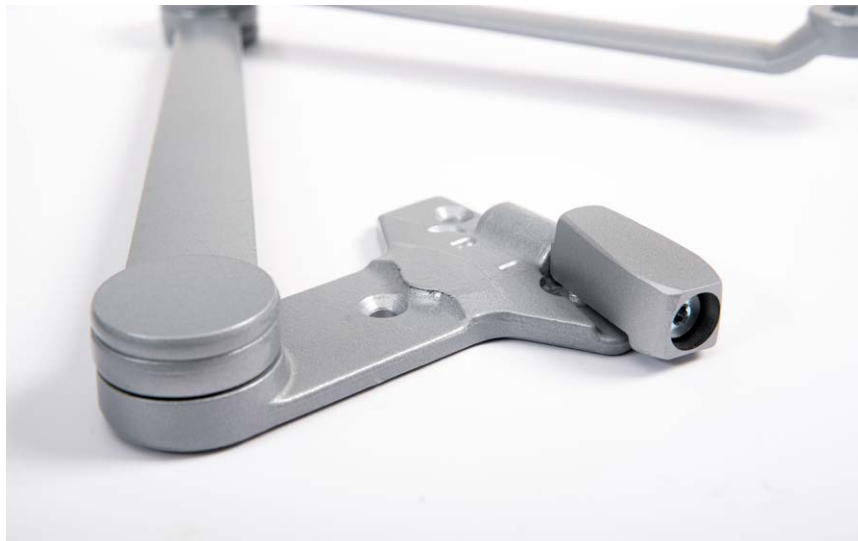
Spring Cush Arm

LH SCUSH - 816/5016

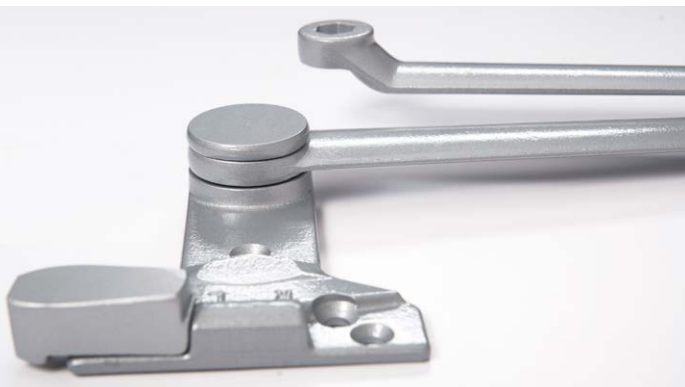
LH SCUSH - 8016

Features

- ▶ Optional, non-handed parallel arm for abusive applications such as education & healthcare
- ▶ Solid forged steel main and forearm construction
- ▶ Field reversible spring mechanism on the soffit shoe
- ▶ Spring softens the dead stop associated with regular cush arms
- ▶ Available for: LH5016, LH816 and LH8016 closers. Please specify when ordering.
- ▶ Available AL & DU



For More Visit Us Online



All product specifications are subject to change.