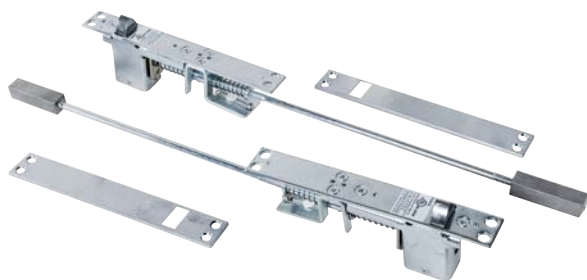
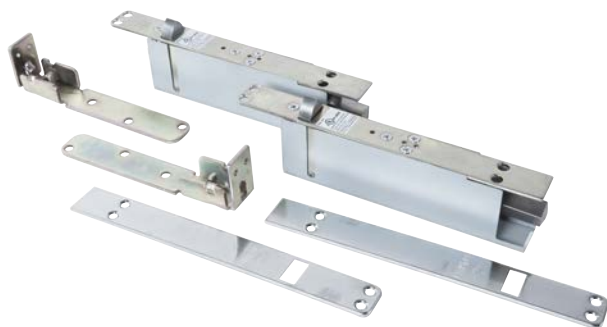


FLATWARE ACCESSORIES



LH610M - FOR METAL DOORS



LH610W - FOR WOOD DOORS

Automatic Flush Bolts

LH610M - FOR METAL DOORS

LH610W - FOR WOOD DOORS

SPECIFICATIONS

- Non-handed
- cUL/UL listed for fire doors. Label A (3 - Hour Fire Doors)
- ANSI/BHMA A156.3
- Faceplate Size:
 - LH610M - 1" x 6-3/4" (25.4mm x 171mm)
 - LH610W - 1" x 8-1/2" (25.4mm x 216mm)
- Finishes: US26D and US32D

OPERATION:

- Used in pairs (top and bottom bolt) on the inactive leaf of double wood or hollow metal doors
- Opening active door automatically retracts top and bottom bolts. Closing active door automatically extends top and bottom bolts
- Can be used as top bolt only when combined with LHFL001
- The LHFL001 is a auxiliary fire latch bolt, temperature actuated, that extends from the active door into the inactive door.